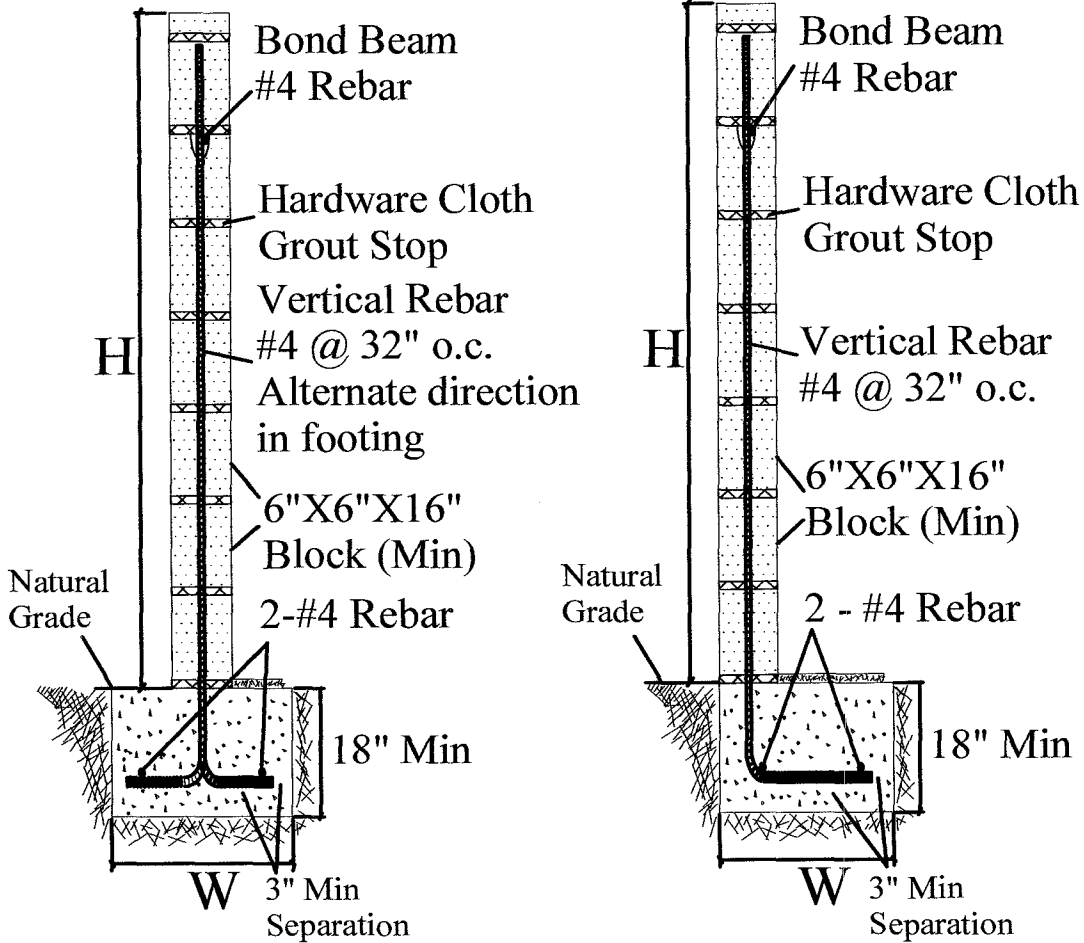


**CONCRETE BLOCK WALL & PILASTER STANDARD DETAILS
(6" AND 8" CONCRETE BLOCK ONLY)**

JOB ADDRESS: _____

PERMIT #: _____



Height of Wall H	Width of Footing W
3'	12"
4'	14"
5'	16"
6'	16"

Specifications

1. Reinforcing steel - ASTM A 615
2. Masonry - ASTM C 90
3. Mortar - ASTM C 270
4. Concrete - $f_c' = 2,500$ psi
Mix: 1 part cement, 3 parts sand, 4 parts rock, max 7 1/2 gal water per sack of cement

Required Inspections for Block Walls

1. Footings and all required reinforcing steel in place prior to placing concrete.
2. Bond beam, reinforcing steel, grout stop at 2nd to last course.
3. Grouting and final

Height of Wall H	Width of Footing W
3'	18"
4'	20"
5'	22"
6'	24"



**CITY OF SEAL BEACH
BUILDING DIVISION**